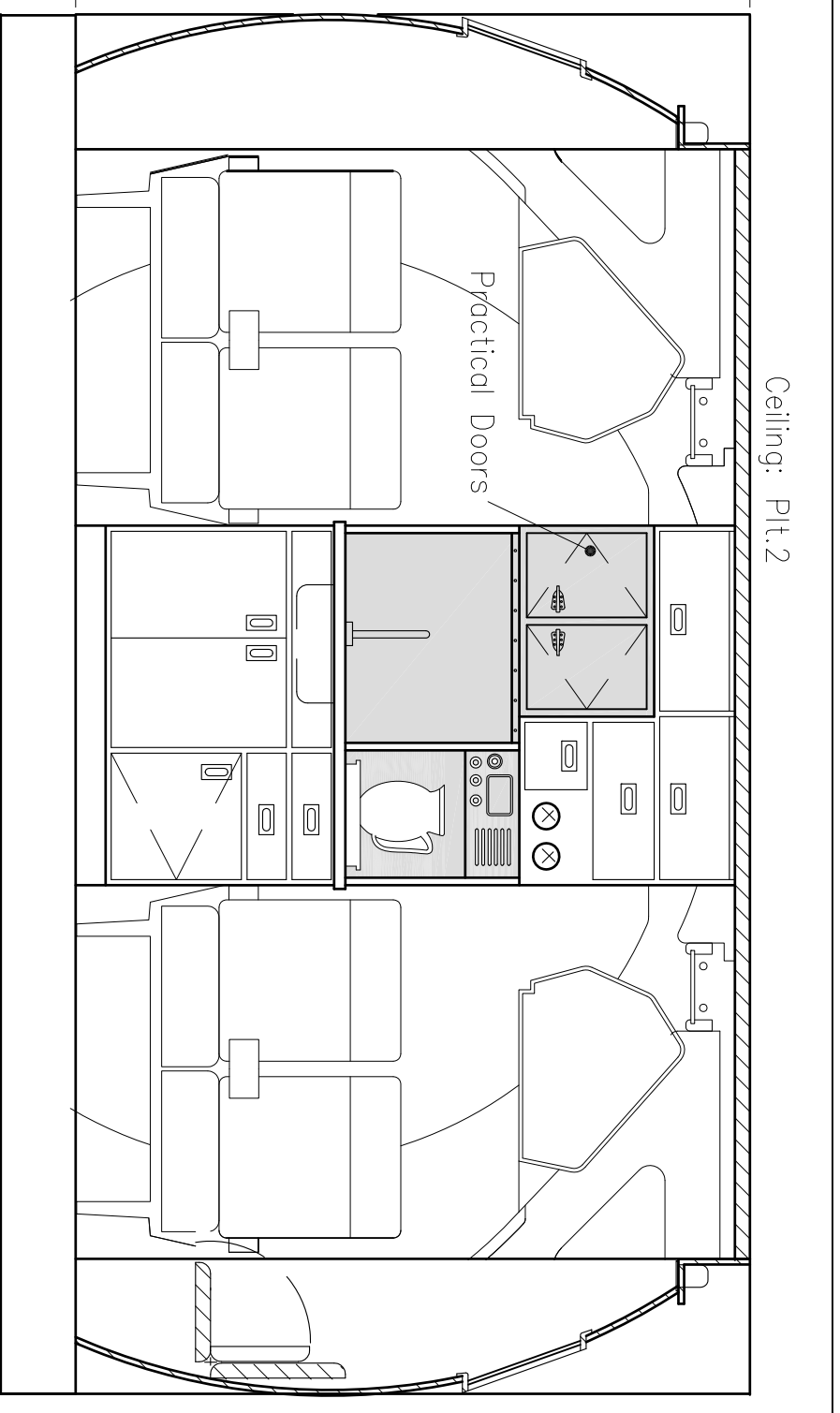
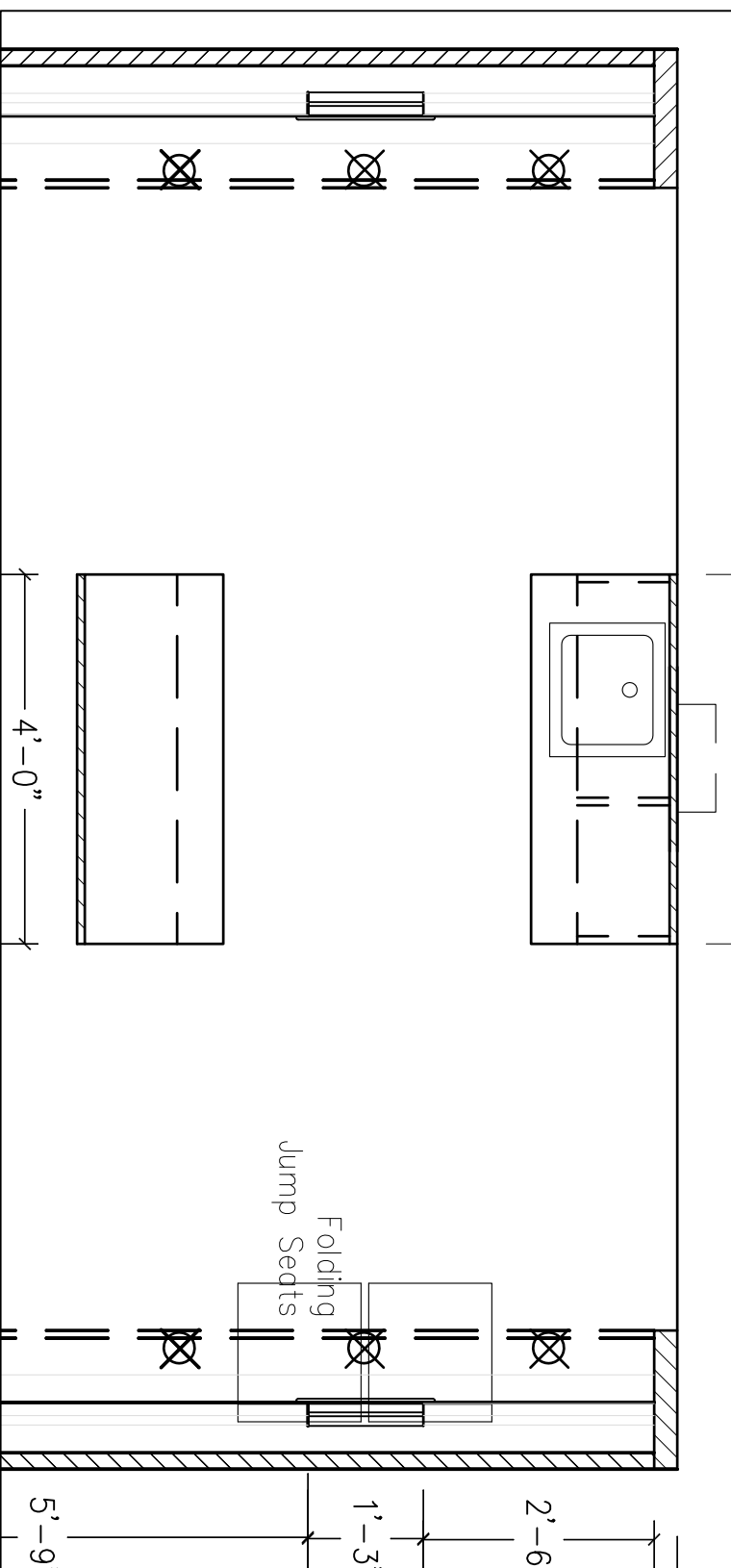


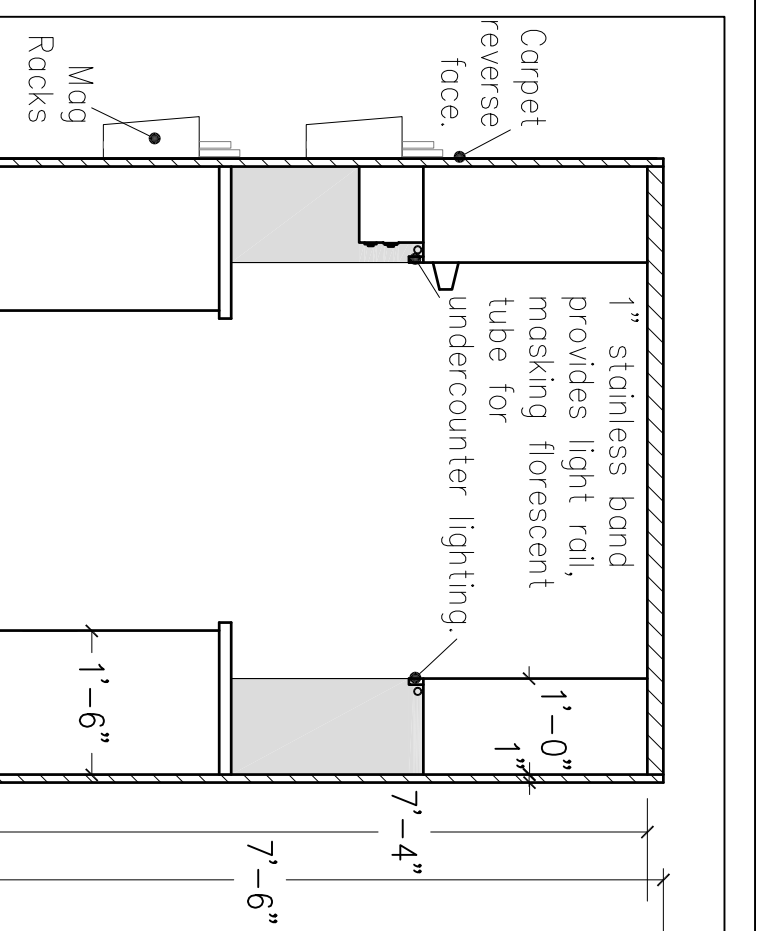
8A Galley Cabinets Aft: Airplane  
SCALE: 1/2" = 1'-0"



8B Galley Cabinets Forward: Airplane  
SCALE: 1/2" = 1'-0"



1 Galley Cabinets: Airplane  
SCALE: 1/2" = 1'-0"



1 Profile Galley Cabinets  
SCALE: 1/2" = 1'-0"

Ceiling: P1t.2

Practical Doors

Stainless

Formica

Slab doors on face frame cabinets (Formica finish). Stainless counters, back and side splash. Inset handles.

Formica

1" stainless band provides light rail, masking florescent tube for undercounter lighting.

Carpet reverse face.

Mag Racks

Carpet back face.

<b>W&amp;P&amp;S</b>		Ekscribe	
Director:	David Petrarca	Production Designer:	Stephen Hendrickson
Art Director:		Art Director:	Ford/Keister
Scale:	1/21/09	Drawn By:	AF
AS Noted		Serial No. Sheet:	nh
Description:	Galley Cabinets	Sheet Date:	1 2/3
Location:	Studio H		8/8
Address:	Kaufman Astoria Studios		